

PRESTON



- Open-concept Floor Plan
- Extra Large Kitchen Island
- Master Bedroom Suite
- Great Room w/Vaulted Ceilings
- Dual-sided Fireplace
- Covered Front and Back Porch

2687 Sq. Ft. | 3 Bedrooms | 2.5 Bath

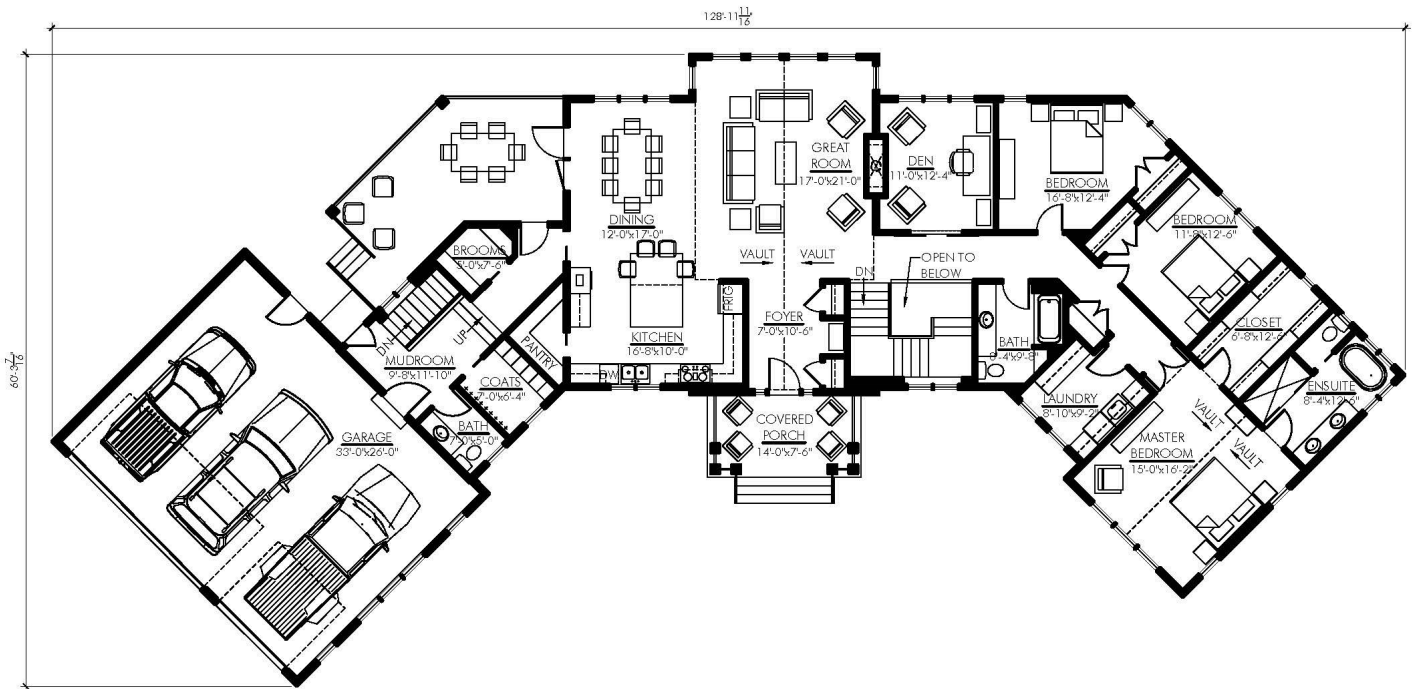
VISIT US AT: [VERTICALWORKSINC.COM](https://www.verticalworksinc.com)



BECOME A FAN OF VERTICAL WORKS, INC.



PRESTON



MAIN FLOOR PLAN - 2687 SQ. FT.
PRESTON-2687

sales@verticalworksinc.com
P:414.762.0950 | F:414.762.0955

3123 S. Memorial Dr. | Mt. Pleasant, WI 53403
101 Parr Ave. | Spicewood, TX 78669



VISIT US AT: VERTICALWORKSINC.COM