

# NEEPAWA



- Open-concept Floor Plan
- Large Square Kitchen Island w/Seating
- Main Floor Master Suite
- Vaulted Ceilings throughout House
- Fireplace
- Large Mudroom

1834 Sq. Ft. | 3 Bedrooms | 2.5 Bath

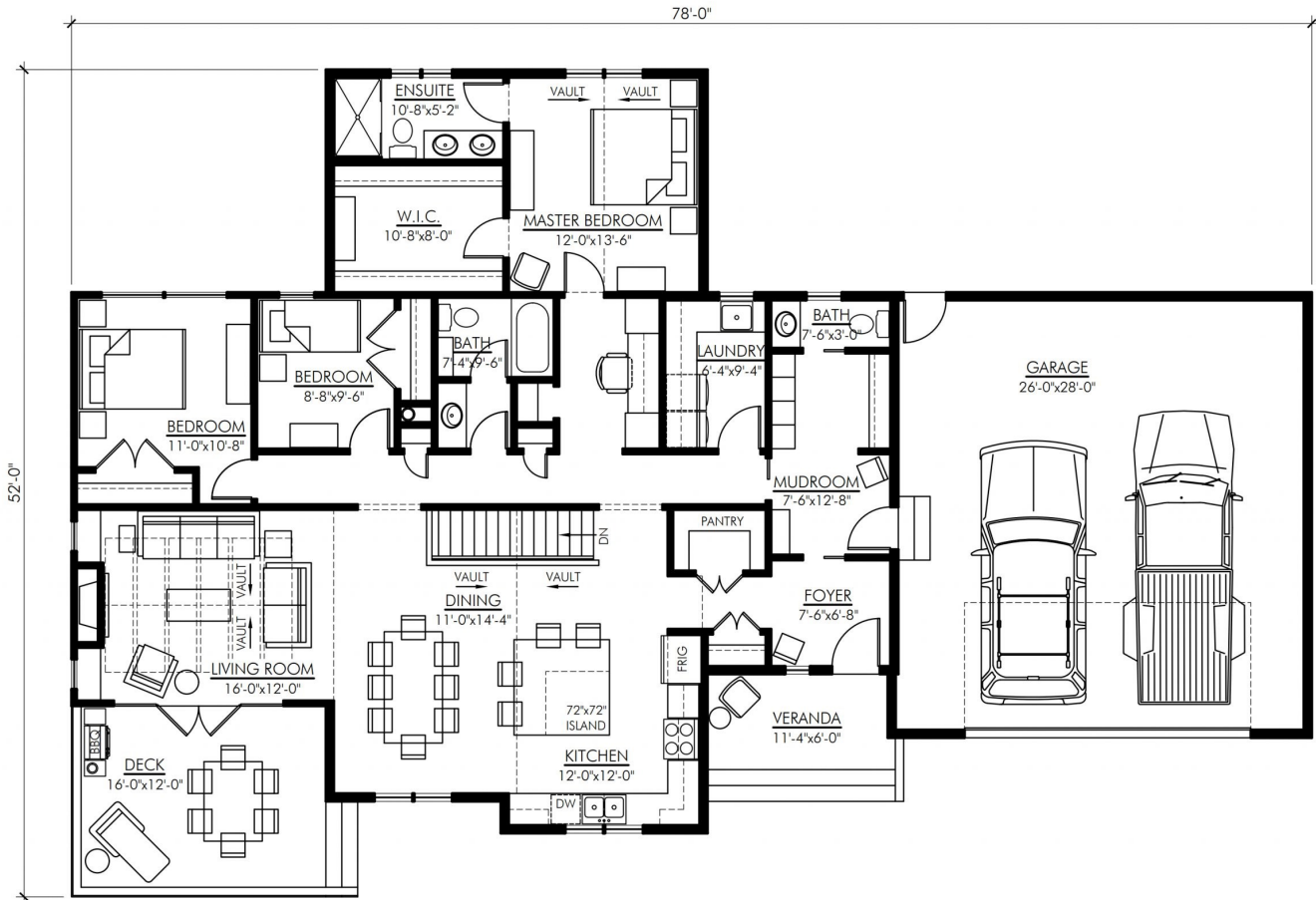
VISIT US AT: [VERTICALWORKSINC.COM](https://www.verticalworksinc.com)



BECOME A FAN OF VERTICAL WORKS, INC.



# NEEPAWA



MAIN FLOOR PLAN  
NEEPAWA - 1834

sales@verticalworksinc.com  
P:414.762.0950 | F:414.762.0955

3123 S. Memorial Dr. | Mt. Pleasant, WI 53403  
101 Parr Ave. | Spicewood, TX 78669



SHERWIN WILLIAMS



MERILLAT CABINETRY



VISIT US AT: VERTICALWORKSINC.COM