

CASCADE



- Large Open-concept Living Area
- Huge Island w/Seating up to 9
- Dual-sided Fireplace
- Master Bedroom w/Walk-in Closet
- Combination Mud Room/Laundry Room
- Tall Ceilings in Living Area

1070 Sq. Ft. | 2 Bedrooms | 1 Bath

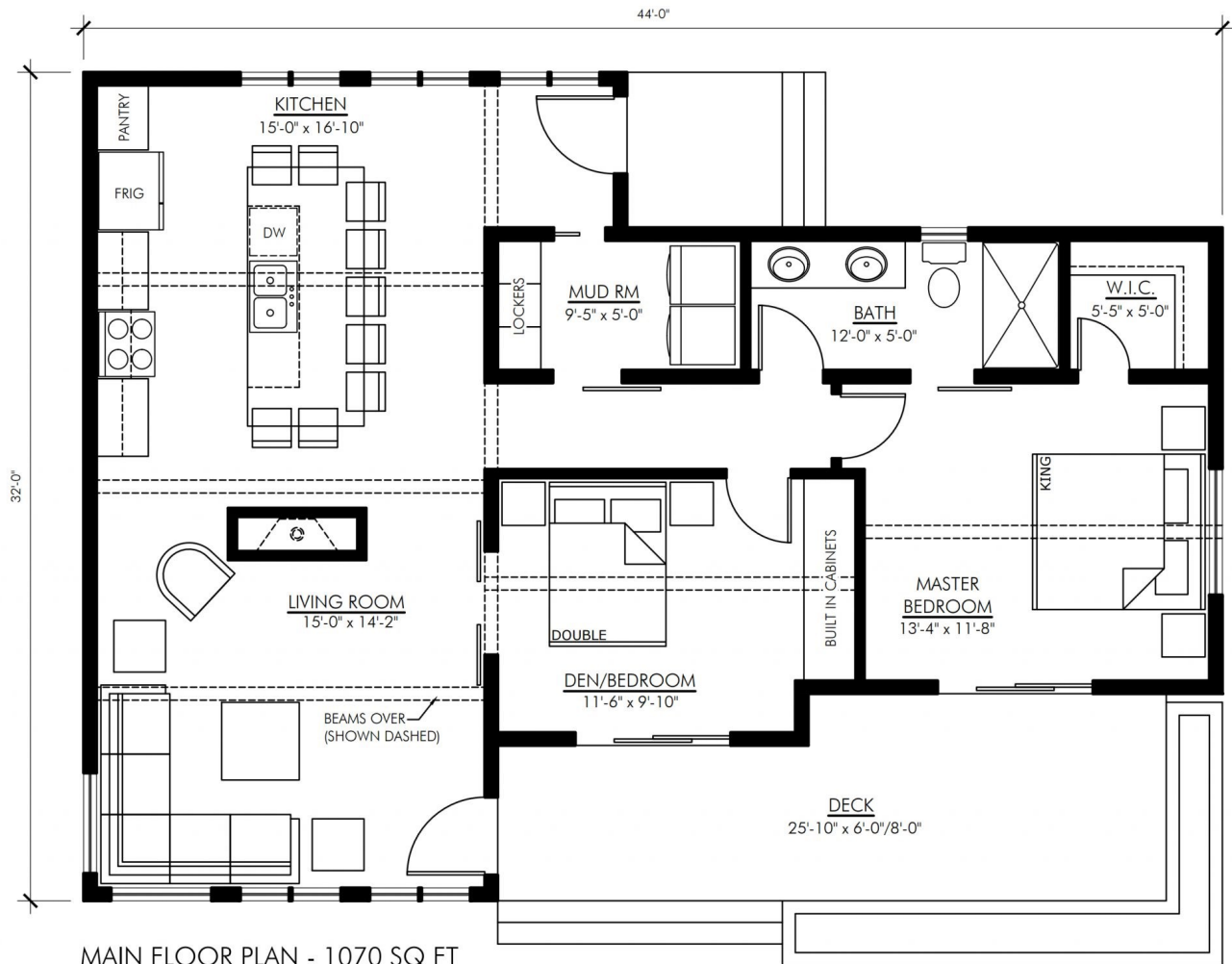
VISIT US AT: [VERTICALWORKSINC.COM](https://www.verticalworksinc.com)



BECOME A FAN OF VERTICAL WORKS, INC.



CASCADE



MAIN FLOOR PLAN - 1070 SQ FT
CASCADE-1070

sales@verticalworksinc.com
P:414.762.0950 | F:414.762.0955

3123 S. Memorial Dr. | Mt. Pleasant, WI 53403
101 Parr Ave. | Spicewood, TX 78669



SHERWIN WILLIAMS



VISIT US AT: VERTICALWORKSINC.COM