



- Massive Stone Fire Place
- Multiple Large Windows
- Loft Bedroom with Vaulted Ceiling
- Compacted Kitchen Area
- Covered Front Porch
- Spacious Livingroom

392 Sq. Ft. | 1 Bedrooms | 1 Bath

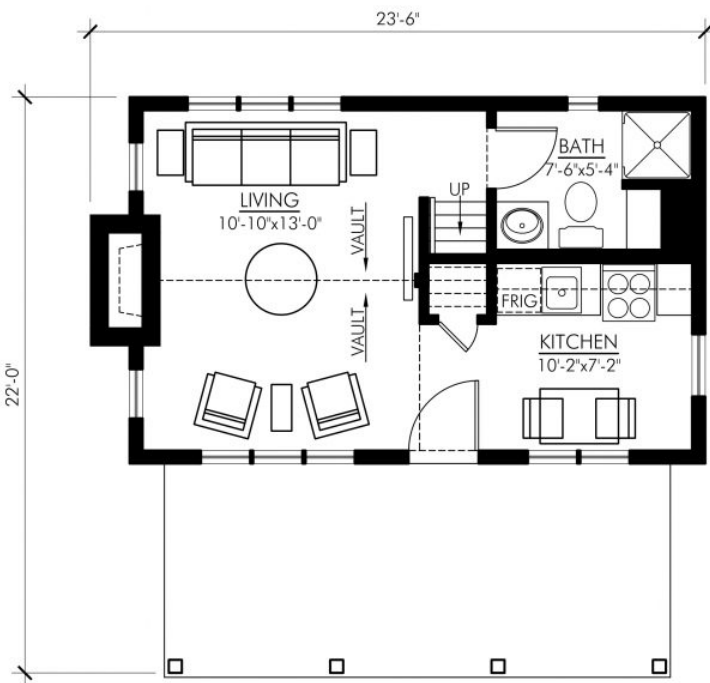
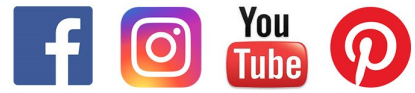
VISIT US AT: [VERTICALWORKSINC.COM](https://verticalworksinc.com)



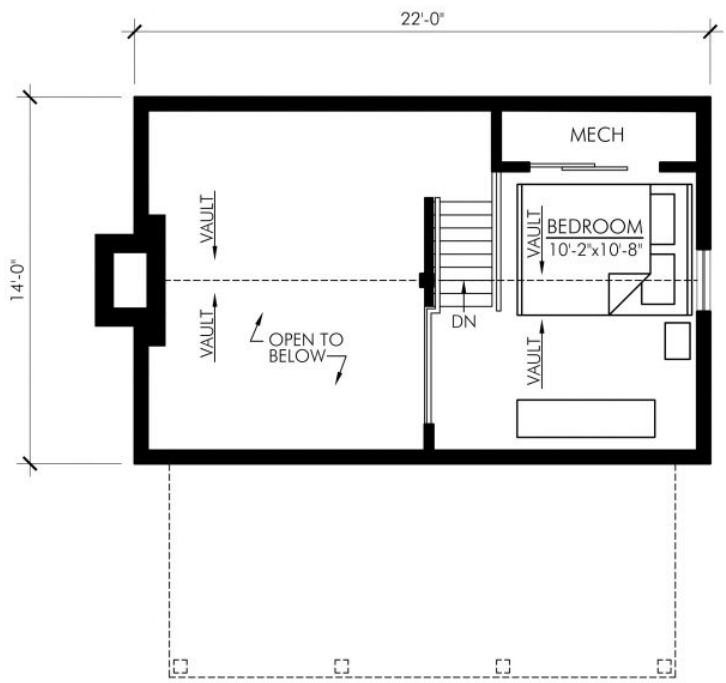
BECOME A FAN OF VERTICAL WORKS, INC.



YUKON



MAIN FLOOR PLAN - 308 SQ FT
YUKON-392



LOFT PLAN - 84 SQ FT
YUKON-392

sales@verticalworksinc.com
P:414.762.0950 | F:414.762.0955

3123 S. Memorial Dr. | Mt. Pleasant, WI 53403
101 Parr Ave. | Spicewood, TX 78669



SHERWIN WILLIAMS



MERRILLAT CABINETRY



VISIT US AT: VERTICALWORKSINC.COM